

# 2026 PRODUCT CATALOG

INTEGRATED ELECTRO-OPTICS PLATFORMS



# SITUATIONAL AWARENESS

Rugged Electro-Optic Panoramic Staring System for Naval and Ground Applications

## See First. Act First.

- 360°/180° 8MP 4K Day (VIS) & HD Night Continuous Coverage
- AI-assisted Detection & Tracking
- Modular Integration for Manned & Unmanned Platforms
- Rugged Design, Hermetic Sealed IP-67, Nitrogen Purged
- 1Gbps Ethernet Interface, RTSP Streaming, Daisy Chain
- 12-40VDC Power Input

# SITUATIONAL AWARENESS

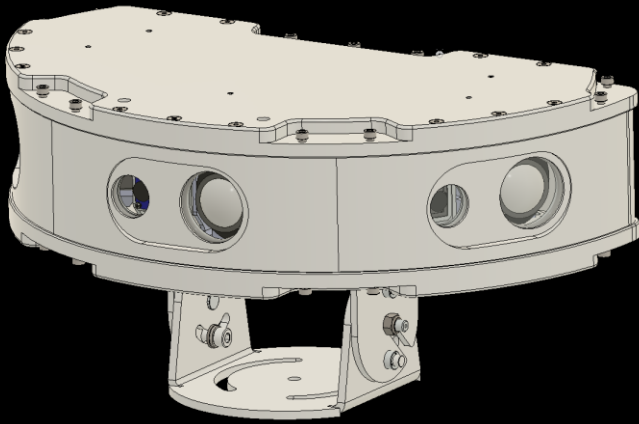
## Rugged 360/180 Day & Night Electro-Optic Panoramic Staring System



	<b>SA360</b>	<b>SA180</b>
<b>LOW LIGHT VIS DAY</b>	<b>SIX (6) x 3840*2160/30fps SONY Super Starlight IMX678 8.0MP 4K 30 FPS SAPPHIRE Window</b>	<b>THREE (3) x 3840*2160/30fps SONY Super Starlight IMX678 8.0MP 4K 30 FPS SAPPHIRE Window</b>
<b>NIGHT LWIR</b>	<b>SIX (6)</b> 1280x1024 or 640x512 12µm 30 FPS GE Window AR/DLC	<b>THREE (3)</b> 1280x1024 or 640x512 12µm 30 FPS GE Window AR/DLC
<b>FOV</b>	420° Deg. (H) 6 x 70° <b>FOV (H) 420° (V) 46°</b>	210° Deg. (H) 3 x 70° <b>FOV (H) 210° (V) 46°</b>
<b>DETECTION</b> (640x512) (1280x1024)	<b>NATO/HUMAN</b> 370m / 167m 830m / 375m	<b>NATO/HUMAN</b> 370m / 167m 830m / 375m
<b>POWER</b>	2A@24VDC (12-40VDC)	1A@24VDC (12-40VDC)
<b>DIMENSIONS</b>	470x470x185 mm	483x270x237 mm
<b>ETHERNET</b>	Embedded Industrial Gigabit Ethernet Switch	
<b>PNL CONNECTOR</b>	Hermetic Stainless Steel D38999/23YD35PN	
<b>CABLE CONNECTOR</b>	Hermetic Stainless Steel D38999/26KD35SN	
<b>WEIGHT (Kg)</b>	30 kg	16 kg
<b>CHASSIS</b>	RUGGED CNC Structure, Aluminum Chassis, ANTI SALT BLACK POWDER PAINT	
<b>IP RATE</b>	Sealed, IP67 Nitrogen Purged	

# SITUATIONAL AWARENESS

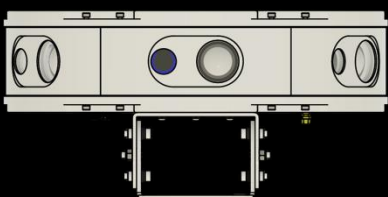
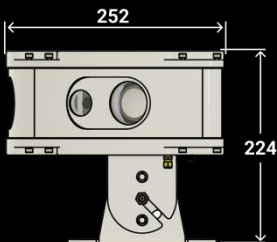
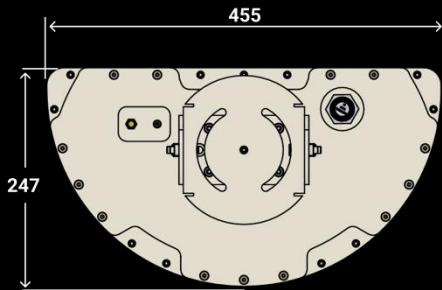
Flat vs. Compact design options



## SA180 - Horizontal

Flat Horizontal, Side by Side

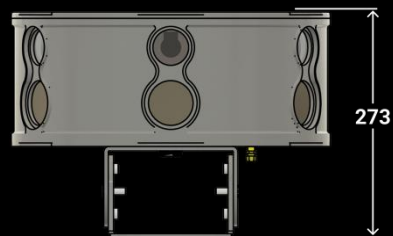
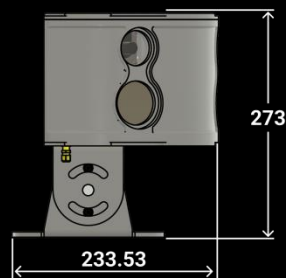
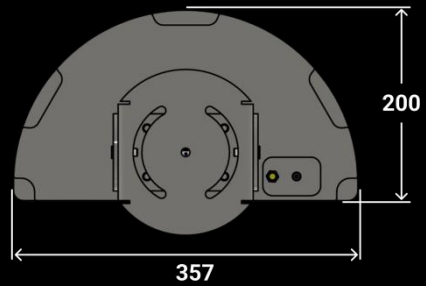
483x270x237 mm



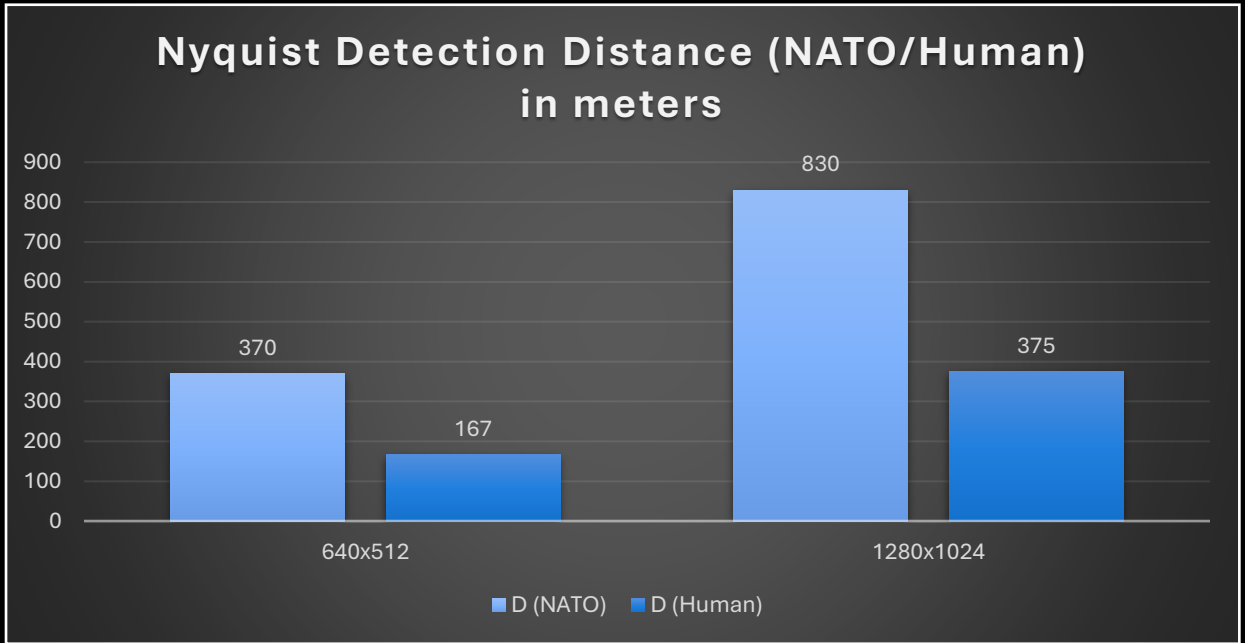
## SA180V - Vertical

Compact Vertical Aligned

357x197x253 mm



# SITUATIONAL AWARENESS



## CABLE CONNECTOR PIN LAYOUT

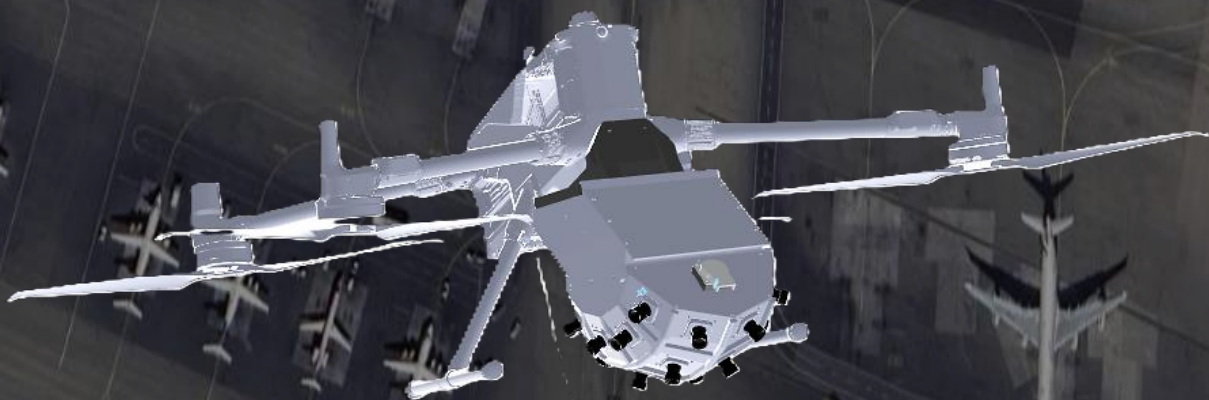
### D38999/26KD35SN Stainless Steel Hermetic Connector

PIN	DESCRIPTION
1	Main ETH 1 (White Orange)
2	Main ETH 2 (Orange)
3	Main ETH 3 (White Green)
4	Main ETH 4 (Blue)
5	Main ETH 5 (White Blue)
6	Main ETH 6 (Green)
7	Main ETH 7 (White Brown)
8	Main ETH 8 (Brown)
9	NC
10	NC
11	12VDC
12	GND

PIN	DESCRIPTION
13	12VDC
14	GND
15	Backup ETH 1 (White Orange)
16	Backup ETH 2 (Orange)
17	Backup ETH 3 (White Green)
18	Backup ETH 4 (Blue)
19	Backup ETH 5 (White Blue)
20	Backup ETH 6 (Green)
21	Backup ETH 7 (White Brown)
22	Backup ETH 8 (Brown)
23-37	NC

# AVIGAIL4K/LW640

Situational Awareness Hemisphere Payload



## See First. Act First.

- 21 x 4K Day (VIS) or Night LWIR-640 Continuous Coverage
- AI-assisted Detection & Tracking
- Modular Integration for Manned & Unmanned Platforms
- Fiber optic Ethernet interface for high transfer rates
- Large terrain coverage 700m x 428m @ 150m alt
- Stabilized Power Supply

# AVIGAIL4K

## Situational Awareness Hemisphere Payload

<b>LOW LIGHT SENSOR</b>	<b>MODEL</b>	<b>AVIGAIL-4K</b>
	<b>SENSORS</b>	21 x Day 4K 3840x2160 pixel IMX678 H.265 Or 21 x LWIR 640 x 512 pixel 12um H.265
	<b>SYSTEM COMPONENTS</b>	IP66 Light Weight Case Fiber Optic Ethernet Connector Embedded switch Software included
	<b>FOV</b>	<b>21 x (57.1° x 30.4°)</b>
	<b>POWER</b>	<b>9-75 VDC, 72W</b>

**SINGLE SENSOR PRACTICAL RANGE COVER (after 10% overlapping)**

H (m)	W (m)	L (m)	Total (SQM)
100	71.1	117	8,319
150	107.1	175.5	18,796

