

# Ex-Sight.Com

## Tomorrow's Technology, Today

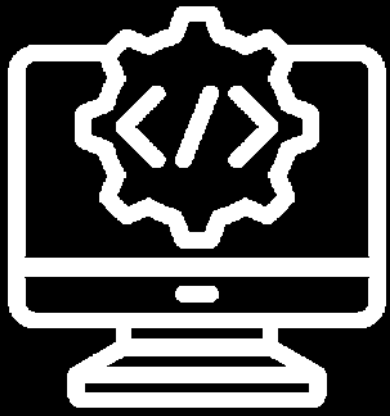
[www.Ex-Sight.Com](http://www.Ex-Sight.Com) | [Sales@Ex-Sight.Com](mailto:Sales@Ex-Sight.Com) | Direct Tel: +972-777-841262



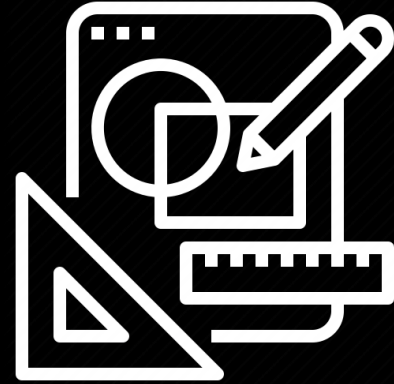
# ***Our Technology***



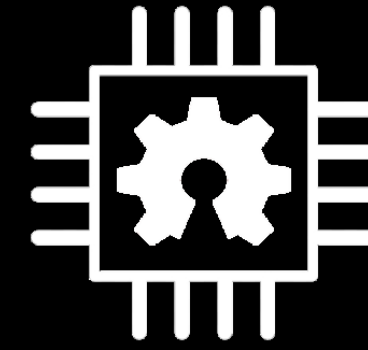




Software  
Development



Product  
Design



Hardware  
Development



R&D

# Ex-Sight.Com

## Our Services



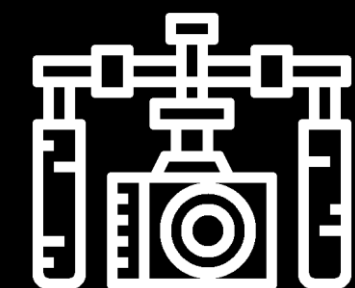
Tactical  
Prototyping



Unmanned  
Solutions



Project  
Management



Electro-Optic  
Systems





➤ *Customized UGV Platforms*





## ➤ **UGV ENGINEERING**

Design of robotic UGV systems to unman any types of existing vehicles for operational flexibility in a wide range of scenarios.





➤ *Observation & Surveillance UGVs*





➤ *Patrol & Defense UGVs*





➤ *Patrol & Defense UGVs*





➤ ***All-Terrain Armored Unmanned Acoustic Moving Targets***





➤ *All-Terrain Armored Unmanned Acoustic Moving Targets*





➤ *Autonomous Charging Stations*



***360° Perimeter***

***Observation Systems***



***C5I***

***HMD Systems***



***DVE Systems***

## ***Situational Awareness >>>***

- LWIR and day driver vision enhancement systems
- 360° peripheral monitoring, threat detection and crew safety
- Long-range PTZ reconnaissance systems
- Zero Emission operation preventing exposure of vehicle/crew positions
- Centralized command & control





## ***C4I Applications***

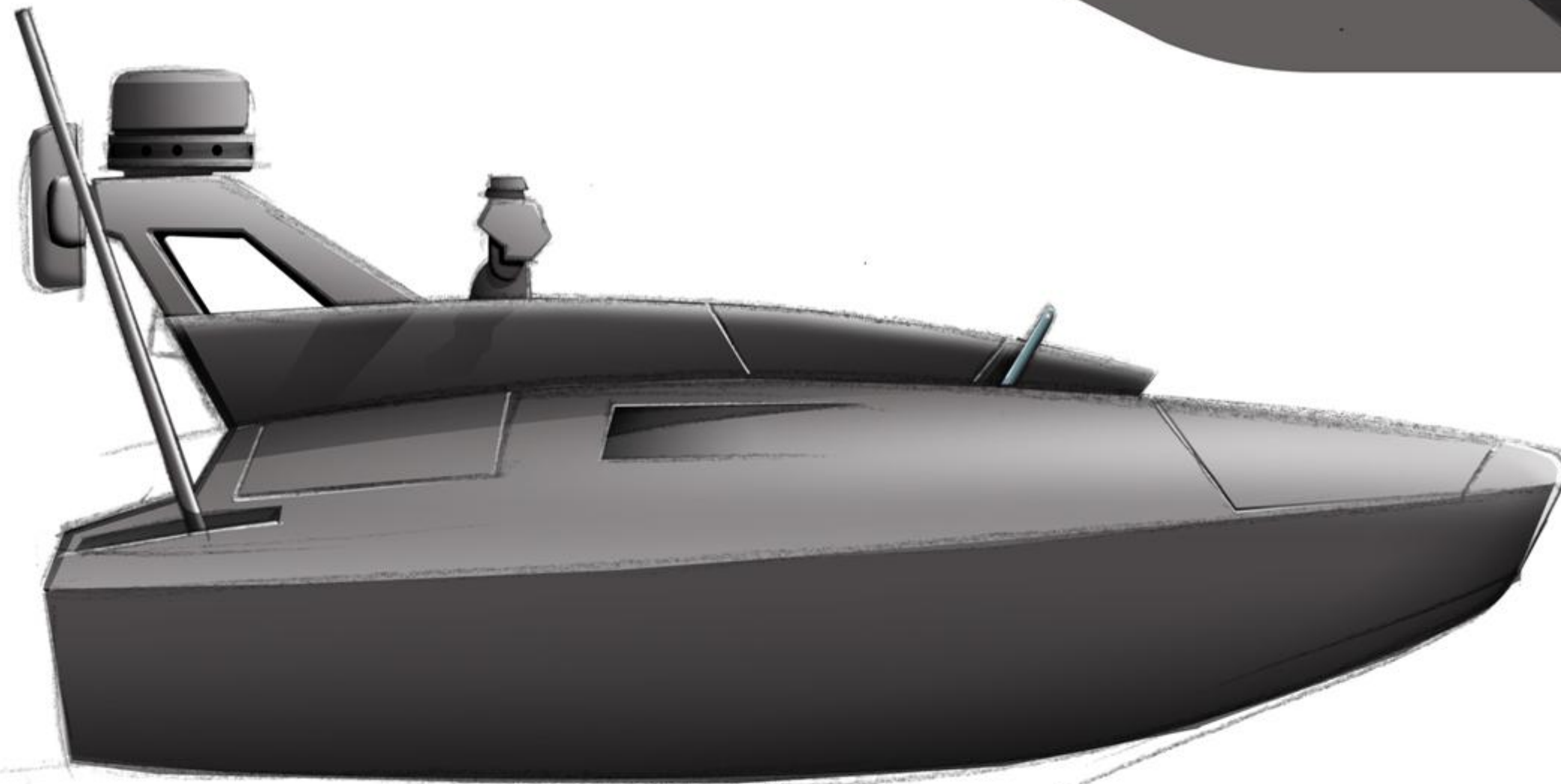
A multi-faceted scene view is created by collecting the data from various on board and remote sensors. The system offers multi-range options for surveillance, tracking and targeting and is fully controlled from the commander unit with digital navigation maps.





# ***USV ENGINEERING***

Multi-functional management of USV mission operation, fast deployment and interfacing with various types of vessels are obtained due to modular architecture and intuitive controls.



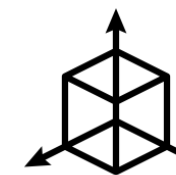
## ***USV Fleet Management***

Autonomous Swarms Coordination



## ***Artificial Intelligence & Tracking***

Object Detection , Follow Me, Underwater Tracking



## ***Obstacle Avoidance***

Obstacle Collision Prevention



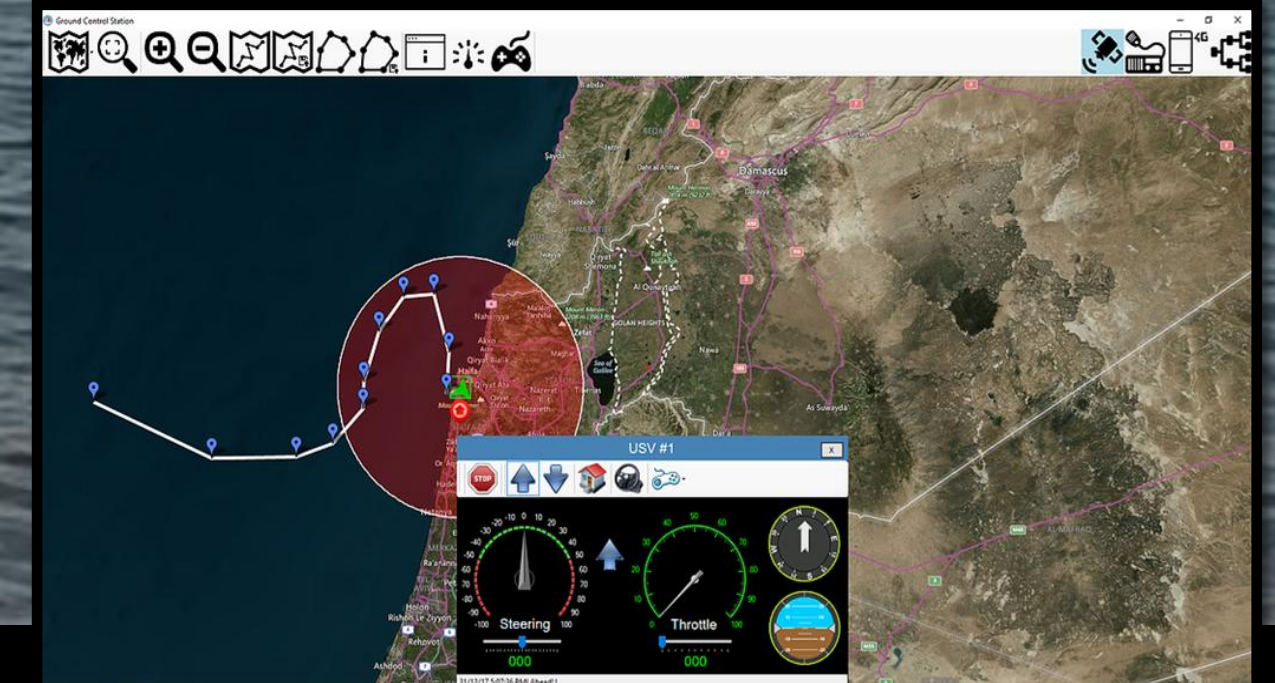
## ***Interface***

Easy to use and intuitive Interface



# ***USV ENGINEERING***

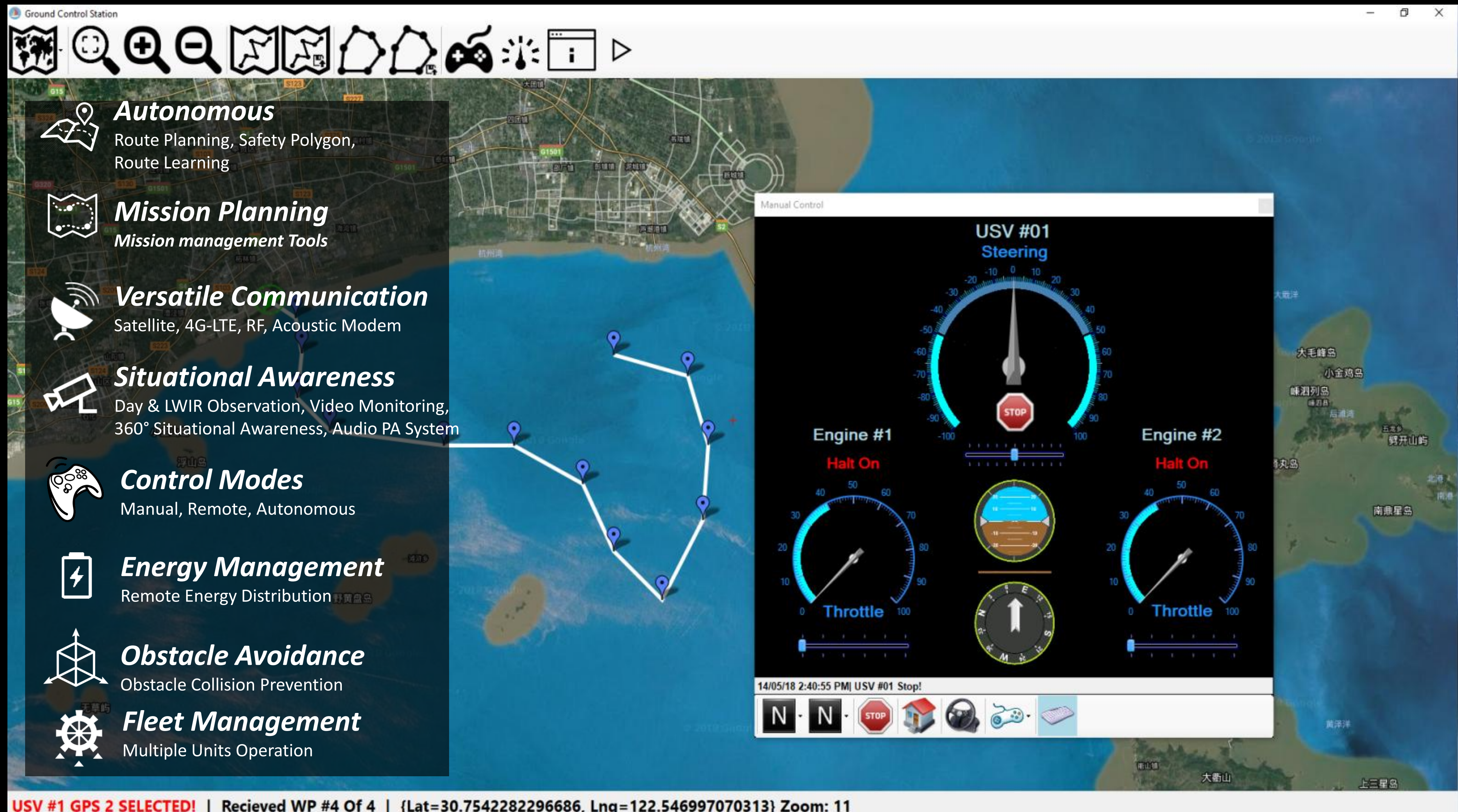
Multi-functional management of USV mission operation, fast deployment and interfacing with various types of vessels are obtained due to modular architecture and intuitive controls.





# CONTROL STATION SOFTWARE

The software is designed for remote & autonomous USV / UGV fleet management. It allows extensive situational awareness, mission planning and execution capabilities.





# ***FIRE DETECTION***

OZ LEHAVA Fire Detection integrates fire detection analytics in a single PTZ camera. The system enables continuous site monitoring in a variety of ranges.





# **3DV DVE**

## *3D Day & LWIR Stereoscopic Driver Vision Enhancement System*

FUZION 3DV is a 3D stereoscopic vision system for driver vision enhancement. It integrates LWIR and Day sensors for 3D depth perception. The video from each day or LWIR sensor is projected on each eye separately in real time.



### *STEREO DAY SENSORS*

- *Two 1080p HD-SDI Day Sensors*
- *Sapphire Window*

### *STEREO LWIR SENSORS*

- *Real Time Analog*
- *Two Uncooled Shutterless Sensors*
- *640 x 512 Pixels*

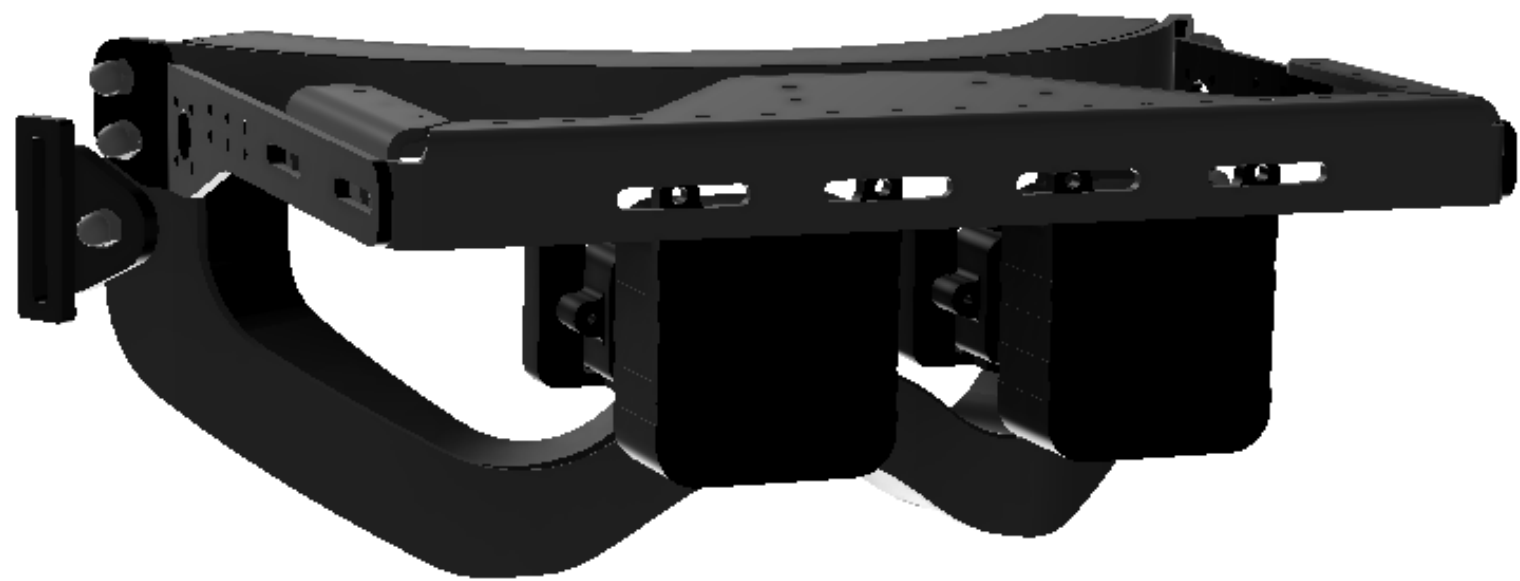
### *Joystick*

### *STEREOSCOPIC HEAD MOUNTED DISPLAY*

- *Light Weight: 200g*
- *Real Time Stereoscopic Vision*
- *3D Day / LWIR Depth Perception*
- *Two Axis Eye Adjustment*
- *2 X SVGA Super High Quality Micro Display*
- *Embedded OSD Markups*
- *Gyro*



# ***3DV Armored DVE***



***STEREOSCOPIC HEAD MOUNTED DISPLAY***



***Joystick***



***3DV Stereoscopic Camera***  
***Day & LWIR***



# ***3DV Armored DVE***





# ***MICRO-RUGGED SERIES***

*IP67 Fixed Lens Day / LWIR Rugged Micro Cameras*



## **LWIR**

Day Sensor: 1080P

Dimensions: 80x62x62mm

Interface: Ethernet+CVBS

Weight: 250g



## **DAY**

LWIR Sensor: 640x480 Pixels

Dimensions: 85x62x62mm

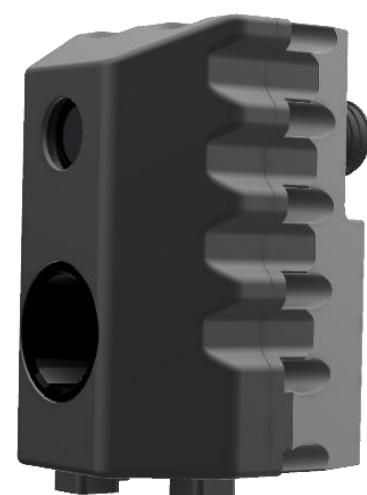
Interface: Ethernet+CVBS

Weight: 300g



# ***DUAL SENSOR SERIES***

*IP67 Fixed Lens Day & LWIR Rugged Micro Cameras*



## **FUSION-FV**

Day sensor: Full HD 1080P  
LWIR Sensor: 640x480 Pixels  
Dimensions: 79x65x106mm  
Interface: Ethernet+CVBS  
Weight: 600g



## **FUSION-FH**

Day sensor: Full HD 1080P  
LWIR Sensor: 640x480 Pixels  
Dimensions: 95x110x62mm  
Interface: Ethernet+CVBS  
Weight: 700g



# **2DV**

*IP67 Day & LWIR Rugged Multi Sensor Rugged Cameras*



## **2DV DUAL FOV**

2 Day Sensors: 1080P HD-SDI  
2 LWIR Sensors: 640x480 Pixels  
Dimensions: 98x109x95mm  
Interface: Ethernet+CVBS  
Weight: 950g



# 2DV

## *Dual FIELD OF VIEW Vision System*

2DV is a unique vision system which provides the operator with narrow and wide fields of view simultaneously. This advanced solution allows to handle different off road scenarios requiring both high and low speed driving.

### *DAY SENSORS*

- *Two 1080p HD-SDI Day Sensors*
- Left Sensor Lens: 25mm; Right Sensor Lens: 25mm*
- *Sapphire Window*

### *LWIR SENSORS*

- *Real Time Analog*
- *Two Uncooled Shutterless Sensors*
- *Left Sensor Lens: 25mm; Right Sensor Lens: 25mm*
- *640x512 Pixels*





# ***PT SERIES***

*IP67 Multi Sensor Gyro Stabilized PTZ*



## **Gyro Stabilized EO**

Vehicle/Vessel Perimeter Security  
Day / LWIR Panorama and Embedded  
Analytics with Automatic PTZ

## **High Precision Tracker**

Naval Target Tracker (DUAL  
IMU)



# **3DV PT SERIES**

*IP67 Day & LWIR Rugged Multi Sensor Gyro Stabilized PT Cameras*



## **3DV GPT**

Stereo Day Sensors: 1080p

Stereo LWIR Sensors: 640x480 Pixels

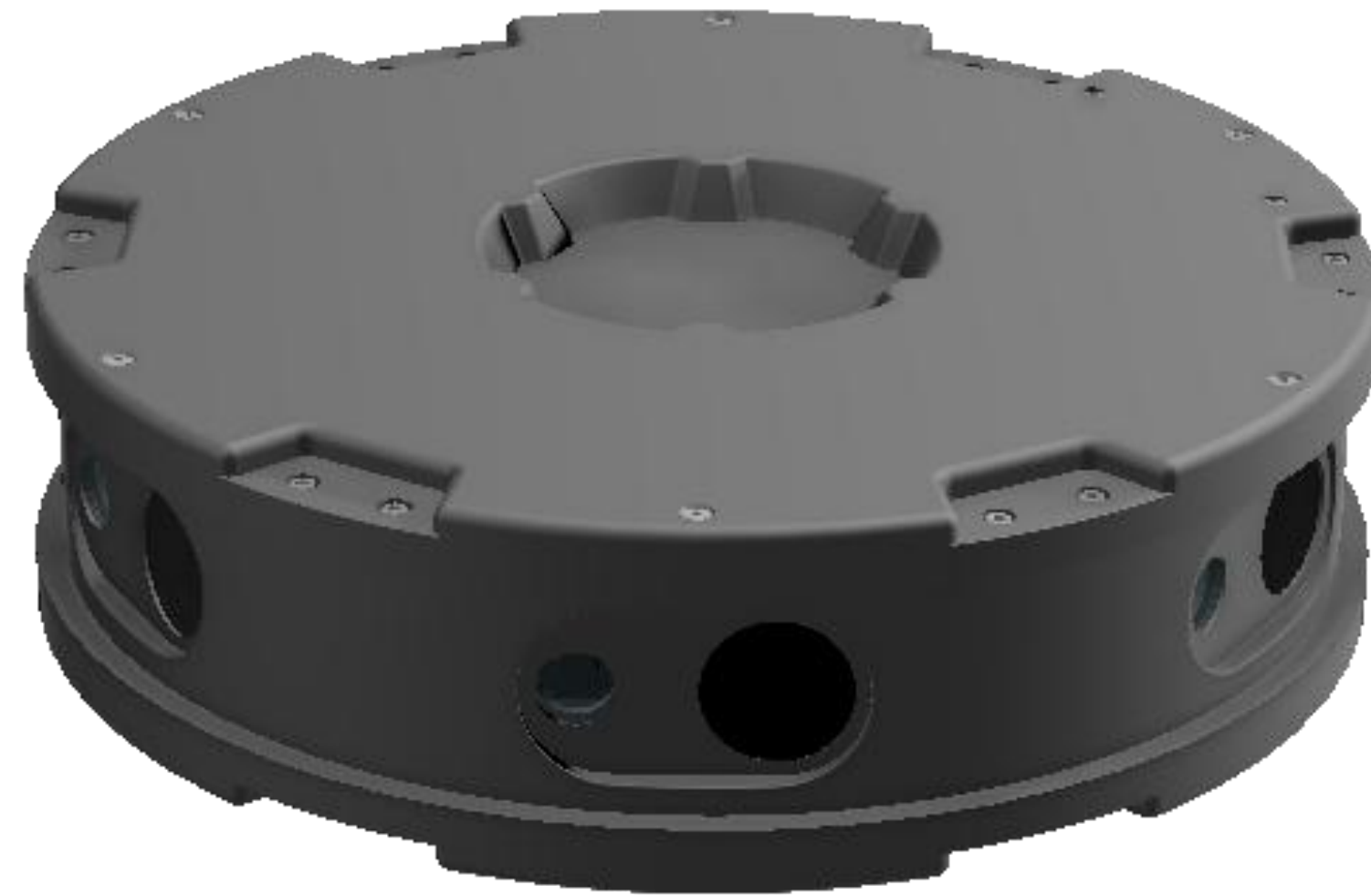
Interface: Ethernet+CVBS

Rating: IP67



# ***360 AI SITUATIONAL AWARENESS***

*IP67 Day & LWIR Rugged AI Situational Awareness*



## **360 AI SITUATIONAL AWARENESS**

6 Day 1080p Sensors with Embedded AI

6 LWIR 640 Sensors with Embedded AI

Diameter: 470mm, Height: 185mm

Interface: Ethernet

Weight: 17Kg



# ***360 AI SITUATIONAL AWARENESS***

*Vehicle/Vessel Perimeter AI Day & Night Situational Awareness*





# ***FIRE DETECTION***

OZ LEHAVA Fire Detection integrates fire detection analytics in a single PTZ camera. The system enables continuous site monitoring in a variety of ranges.

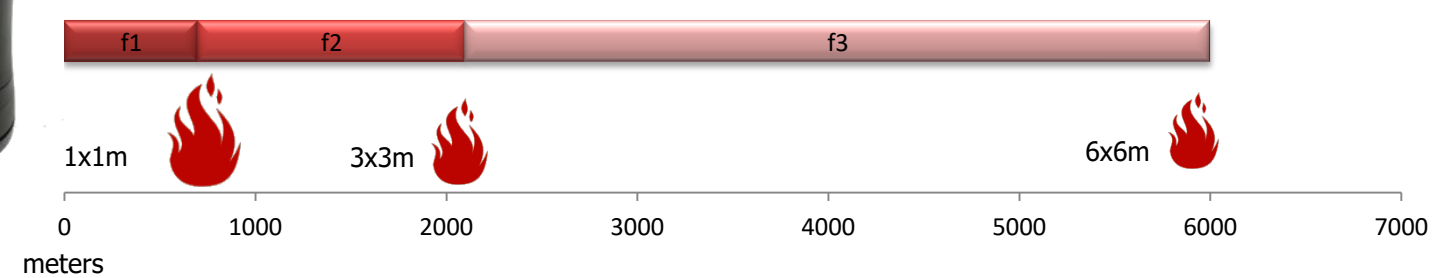






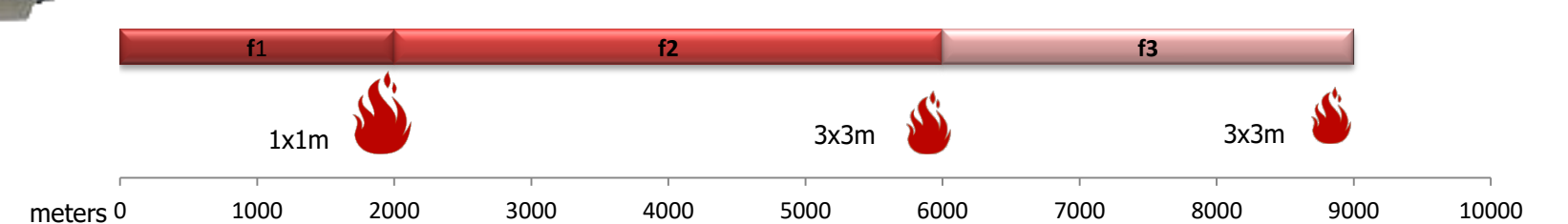
### ***NOAM PTZ Platform***

LWIR 640 60mm Fire Detection Ranges



### ***OZ PTZ Platform***

LWIR 640 45/135mm Fire Detection Ranges







**Sales@Ex-Sight.com | [www.Ex-Sight.com](http://www.Ex-Sight.com) | +972-777-841-262**