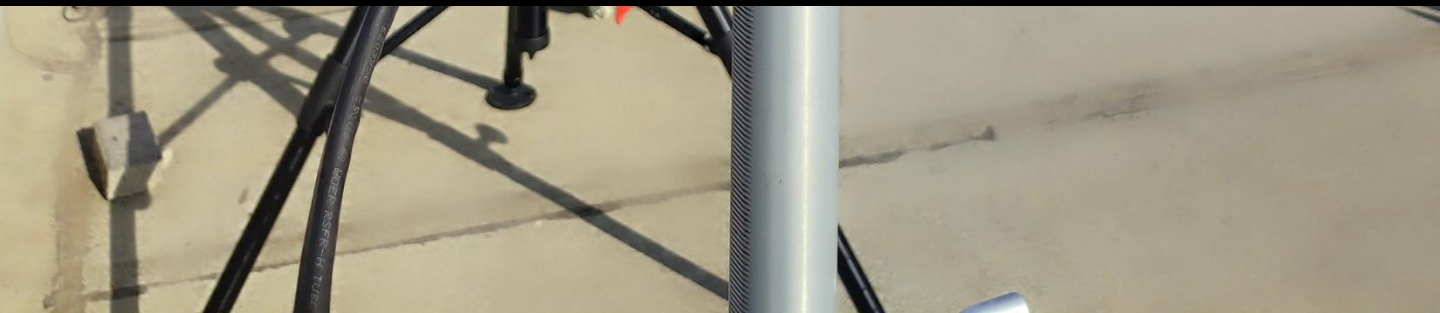




SIGHT 15-100

MULTI SENSOR VISION SYSTEM



SIGHT IS QUALIFIED:

MIL-STD-810G FOR THE FOLLOWING PROCEDURES:

High Temp. - Method 501.6, Procedure I Storage high temp 168H

Low Temp. - Method 502.6, Procedure I Storage low temp 24H

High Temp. - Method 501.6, Procedure II Operation high temp 24H

Low Temp. - Method 502.6, Procedure II Operation low temp

Temperature Shock -Method 503.6,63/-33, 1 cycle

Vibration - method 514.7, transportation highway,1h each axis total 3h

Vibration - method 528.1, operational 15 sec each frequency, endurance 2h

Shock - method 516.7, Procedure I,40g/11ms

Dust -method 510.6, procedure I

Salt Fog, total 96h

SAND -Method 510.6, procedure II

Humidity - Method 507.6, Procedure II, 240H

Sealing test towards IEC60529 IP67 code

Solar radiation - Method 505.4 procedure I – 72h

Rain - Method 506.4, Procedure II, 15minutes

Fluids contamination - Method 504.3

MIL STD 461F EMI RFI

CE101, CE102, CS101, CS114, CS116, RE101 RE102, RS101,
RS103 (2Mhz-18Ghz;50V/m).

Tested by:



ISRAEL TESTING LABORATORIES
Global Certifications You Can Trust

SIGHT15-100



DAY SENSOR

BOSCH 1920x1080 1/2.8" CMOS
SAPPHIRE window, 8-240mm KOWA zoom
Lens with Wiper to protect from
rain/dust/mud

THERMAL SENSOR

LWIR LYNRED 8-14um 30mK 640x480
X6.6 Zoom TEMMEK 15-100mm 25/50 fps
GE window

PSU

12-40VDC MIL STD 461, MIL STD 1275

POWER

12-40 VDC 120W Max. MIL.STD704,
MIL.STD810G POWER STABILIZER

INTERFACE

ETHERNET TCP/IP INTERFACE

CONNECTOR

Hermetic Stainless Steel
D38999/23YC35PN



FULL SYSTEM
707x505x505 (mm)

Operating Temp

-35°C to 55°C

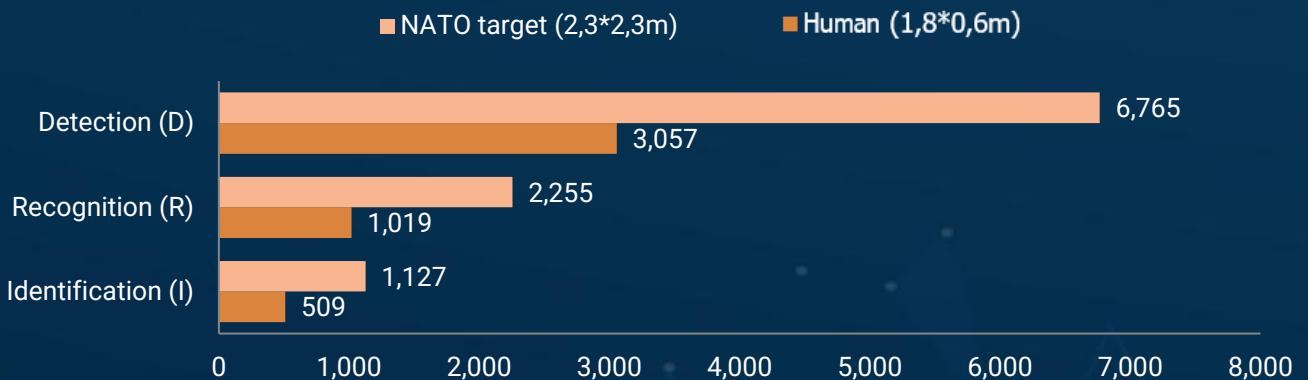
MTBF

50,000 hours

IP RATE

IP67 Nitrogen Purged, Anti Salt Paint RAL
7004 coated, Internal heater element

SIGHT15-100 DRI LWIR (m)

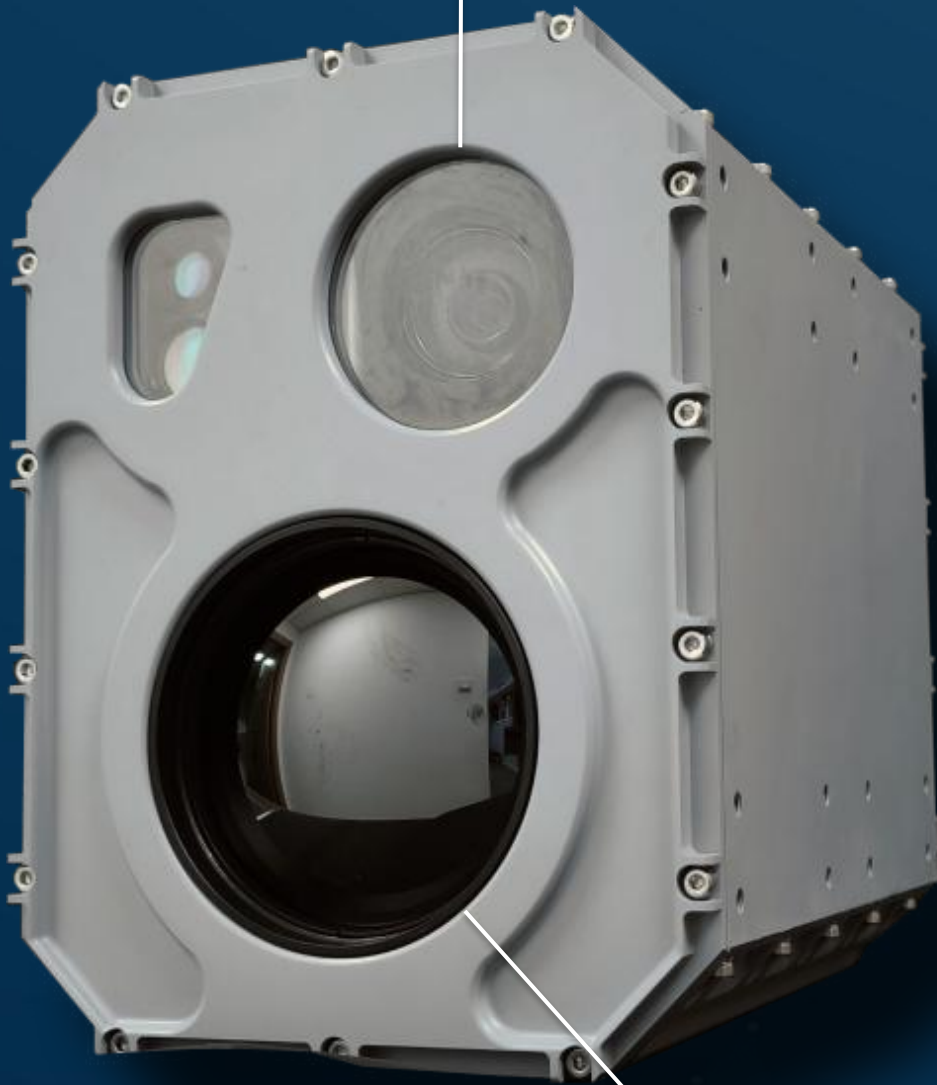


SIGHT15-100

SYSTEM OVERVIEW

DAY ZOOM SENSOR

BOSCH 1920x1080
8-240mm x30 zoom lens



LWIR ZOOM SENSOR

LWIR LYNRED 640x480
X6.6 ZOOM
TEMMEK 15-100mm

- EX-SIGHT APPLICATION, SDK OPEN SOURCE C#
- ETHERNET INTERFACE
- IP-67 NITROGEN PURGED

PTOWL

MOUNTING TYPE

U Mount

TILT

Max $\pm 70^\circ$ Deg
Max. Motor Torque (NM) 150

PAN

Cont. 360° Deg
Motor Torque (NM) 150

ACCURACY

0.01 Deg

MAX.SPEED

30 RPM, 0.1 up to 120° /sec

MAX. PAYLOAD

50 kg

POWER

24-48VDC (Max 16A@24VDC)

IP RATE

IP66



Full System 32 (kg)



FULL SYSTEM
707x505x505 (mm)

SIGHT15-100





② **D38999/23YC35SN**

Mil. Std Stainless Steel connector

① **D38999/23YC35PN**

Mil. Std Stainless Steel connector

PANEL PIN LAYOUT (1)

D38999/23YC35PN Stainless Steel Hermetic Connector

PIN	DESCRIPTION
1	+48VDC POWER IN
2	+48VDC POWER IN
3	+48VDC POWER IN
4	+48VDC POWER IN
5	+48VDC POWER IN
6	+48VDC POWER IN
7	+48VDC POWER IN
8	GND POWER IN
9	GND POWER IN
10	GND POWER IN
11	GND POWER IN

PIN	DESCRIPTION
12	GND POWER IN
13	GND POWER IN
14	GND POWER IN
15	ETHERNET (1) TX+
16	ETHERNET (2) TX-
17	ETHERNET (3) RX+
18	NC
19	NC
20	ETHERNET2 (6) RX-
21	NC
22	NC

PANEL PIN LAYOUT (2)

D38999/23YC35SN Stainless Steel Hermetic Connector

PIN	DESCRIPTION
1	NC
2	NC
3	(+9 TO +36VDC) INPUT POWER
4	GND INPUT POWER
5	(+9 TO +36VDC) INPUT POWER
6	GND INPUT POWER
7	NC
8	NC
9	ETHERNET (1) TX+
10	ETHERNET (2) TX-
11	ETHERNET (3) RX+

PIN	DESCRIPTION
12	ETHERNET (6) RX-
13	NC
14	NC
15	NC
16	NC
17	NC
18	NC
19	NC
20	NC
21	NC
22	NC