

xEye640

H.264 MIL.STD LWIR FIXED CAMERA



xEYE 640

H.264 MIL.STD LWIR FIXED CAMERA

Thermal Sensor

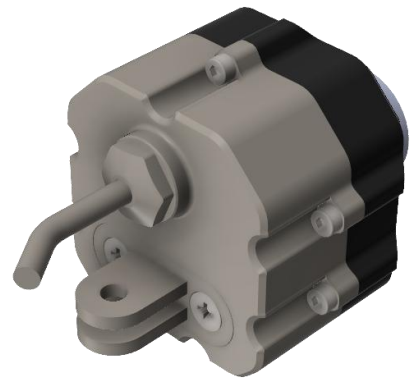
LWR Imager	Uncooled VOX Microbolometer
Input	640x512 17 μ m FLIR Tau2
Spectral Band	7.5-13.5 μ m
LWIR Frame Rate	9Hz / 30 Hz
Sensitivity (NETD)	<50 mK at f/1.0
Compression Format	H.264, MJPEG
Number of Streams	Dual Stream, Configurable
Burnt-in Text Interface	+

Thermal Lens

Focal Length (mm)	7.5 9 13 19 25 35 50 60 100
Max. Wide FOV	90° x 69° (7.5mm)
Max. Narrow FOV	6.2° x 5° (100 mm)

Housing

Protection Rate	IP 67
-----------------	-------

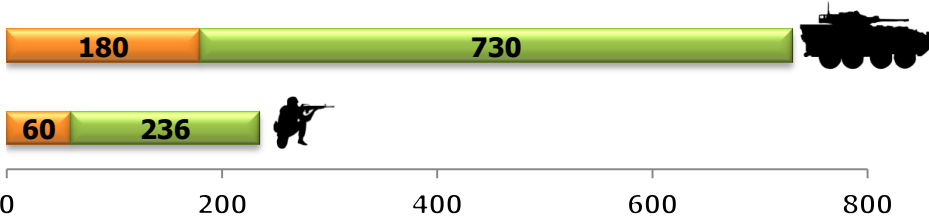


xEYE 640

H.264 MIL.STD LWIR FIXED CAMERA

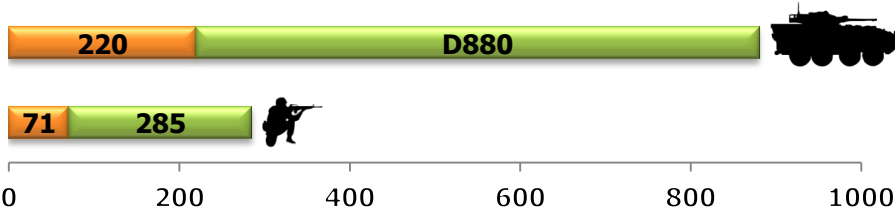
7.5mm Lens

Detection & Recognition Ranges (m)



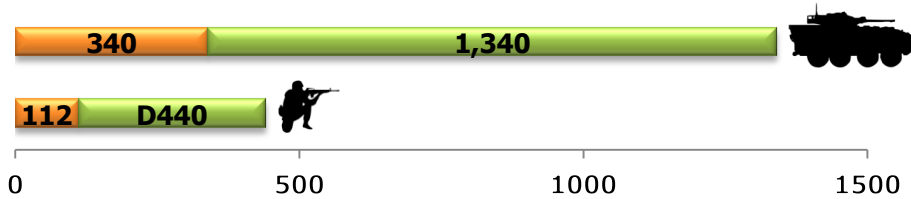
9mm Lens

Detection & Recognition Ranges (m)



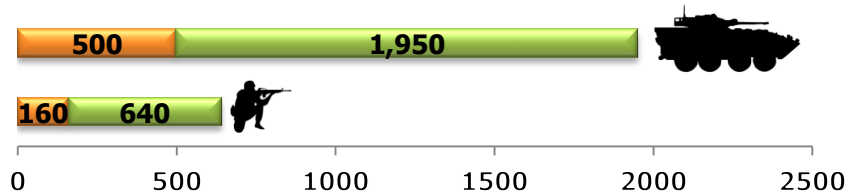
13mm Lens

Detection & Recognition Ranges (m)



19mm Lens

Detection & Recognition Ranges (m)

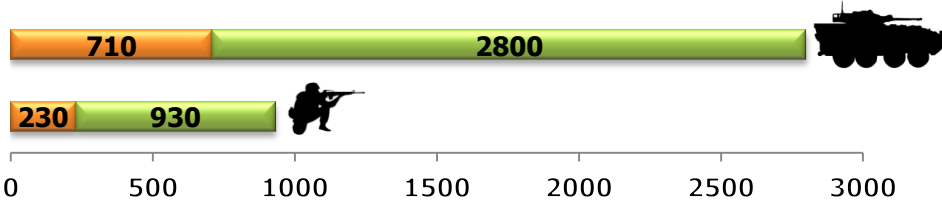


xEYE 640

H.264 RUGGED LWIR FIXED CAMERA

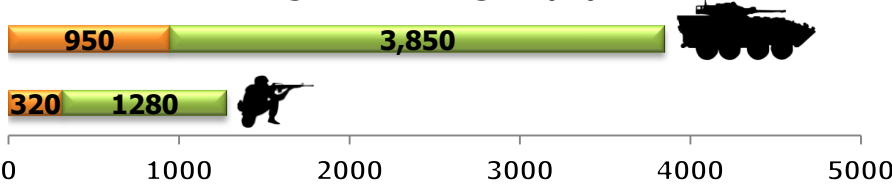
25mm Lens

Detection & Recognition Ranges (m)



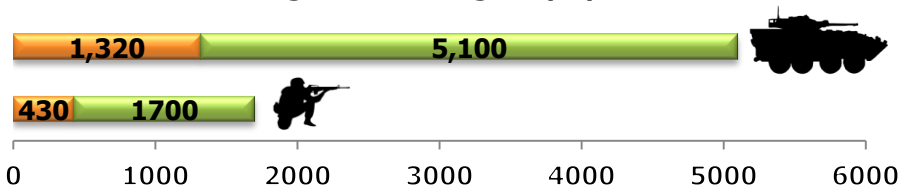
35mm Lens

Detection & Recognition Ranges (m)



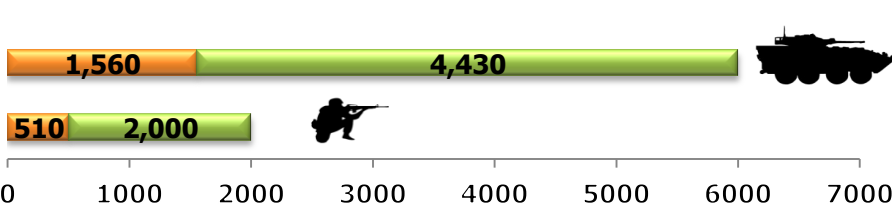
50mm Lens

Detection & Recognition Ranges (m)



60mm Lens

Detection & Recognition Ranges (m)



100mm Lens

Detection & Recognition Ranges (m)

