

# IR640-26-105

## LWIR SENSOR WITH CONTINUOUS ZOOM LENS

The system integrates a super sensitive LWIR Sensor 640x480 providing perfect vision even in total darkness.

### LWIR IMAGER

Uncooled VOX Microbolometer

### RESOLUTION (PIXELS)

640 X 480 NTSC/PAL

### SPECTRAL BAND

7.5 – 14  $\mu$ m

### SENSITIVITY (NEDT)

50 mK

### VIDEO OUTPUT

Analog RS-170 (30Hz) / CCIR (25Hz)

### OPHIR OPTRONICS LWIR LENS

26 -105 mm Cont. Zoom f/ 1.6

### NARROW HFOV 105mm

5.9°

### WIDE HFOV 26mm

25.3°

### OPERATING VOLTAGE

7 - 28 VDC

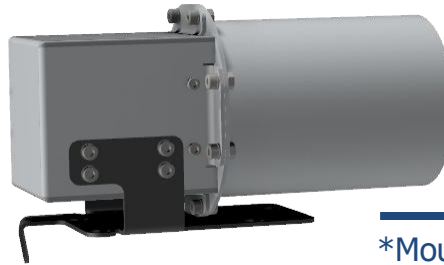
### POWER CONSUMPTION

Avg: 2.5w; (Max: 9.5w)

### OPERATING TEMPERATURE

-40°C to +60°C

LWIR Lens 26-105mm



\*Mounting Stage

### VIDEO CONNECTOR

MIL-DTL-38999 Type A

### POWER/ COMMUNICATION CONNECTOR

MIL-DTL-38999 Type A

### DIMENSIONS (HxWxL), mm

103x120x206

### WEIGHT, g

1400

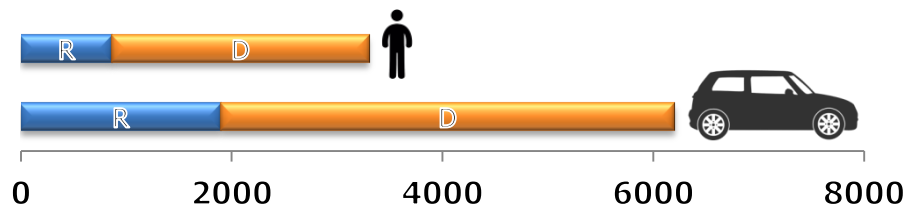
### ENCLOSURE COLOR

Black

### Cont. Zoom 26-105mm Lens

105mm Lens Narrow HFOV 5.9°

26mm Lens Wide HFOV 25.3°



### f/1.6 Detection & Recognition Ranges (m)

	Detection	3,300m
	Recognition	870m

	Detection	6,200m
	Recognition	1,900m

# IR640-26-105

## LWIR SENSOR WITH CONTINUOUS ZOOM LENS

Dimensions: [mm]

